

Electronic Supplementary Material to: Reexamination of the Relationship between Tropical Cyclone Size and Intensity over the Western North Pacific*

Kexin CHEN^{1,2,3}, Guanghua CHEN¹, and Donglei SHI^{1,2}

¹*Key Laboratory of Cloud-Precipitation Physics and Severe Storms, Institute of Atmospheric Physics,
Chinese Academy of Sciences, Beijing 100029, China*

²*University of Chinese Academy of Sciences, Beijing 100049, China*

³*Shanghai Typhoon Institute, China Meteorological Administration, Shanghai 200030, China*

ESM to: Chen, K. X., G. H. Chen, and D. L. Shi, 2022: Reexamination of the relationship between tropical cyclone size and intensity over the western North Pacific. *Adv. Atmos. Sci.*, **39**(11), 1956–1968, <https://doi.org/10.1007/s00376-022-1450-6>.

*The online version of this article can be found at <https://doi.org/10.1007/s00376-022-1450-6>.

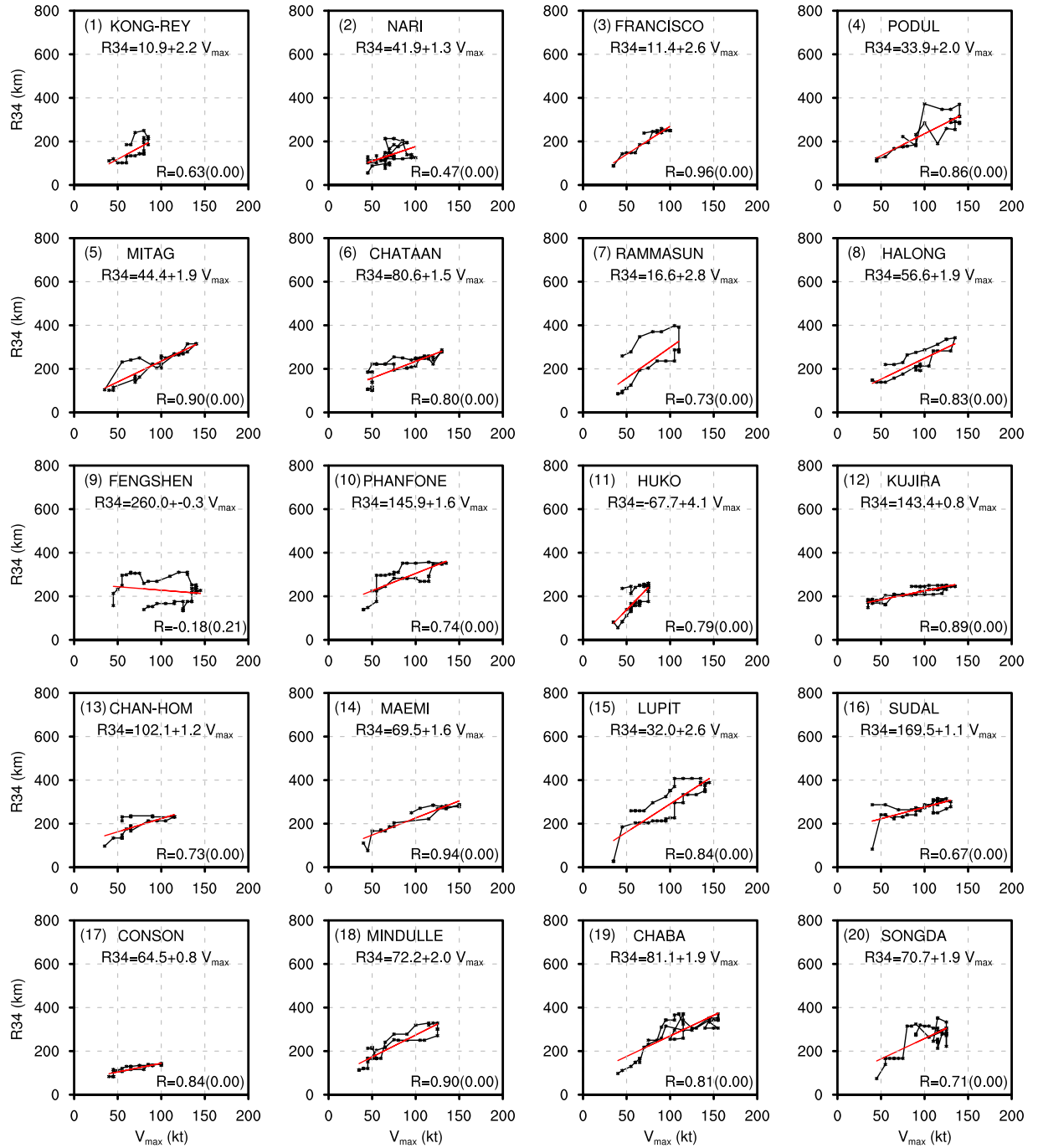


Fig. S1. Correlation and regression analysis throughout the whole lifetime for 73 JTWC TCs from 2001 to 2020 over the western North Pacific. In each panel, the number and name of each TC are presented in the top left corner. Records of R_{34} and V_{max} are denoted by the black asterisks, and the linear regression lines of R_{34} against V_{max} are shown by the red line. The specific linear regression equation between R_{34} and V_{max} is presented. The correlation coefficient (R) between R_{34} and V_{max} is displayed in the bottom right corner of each panel, with the test value (p) of the R given in parentheses.

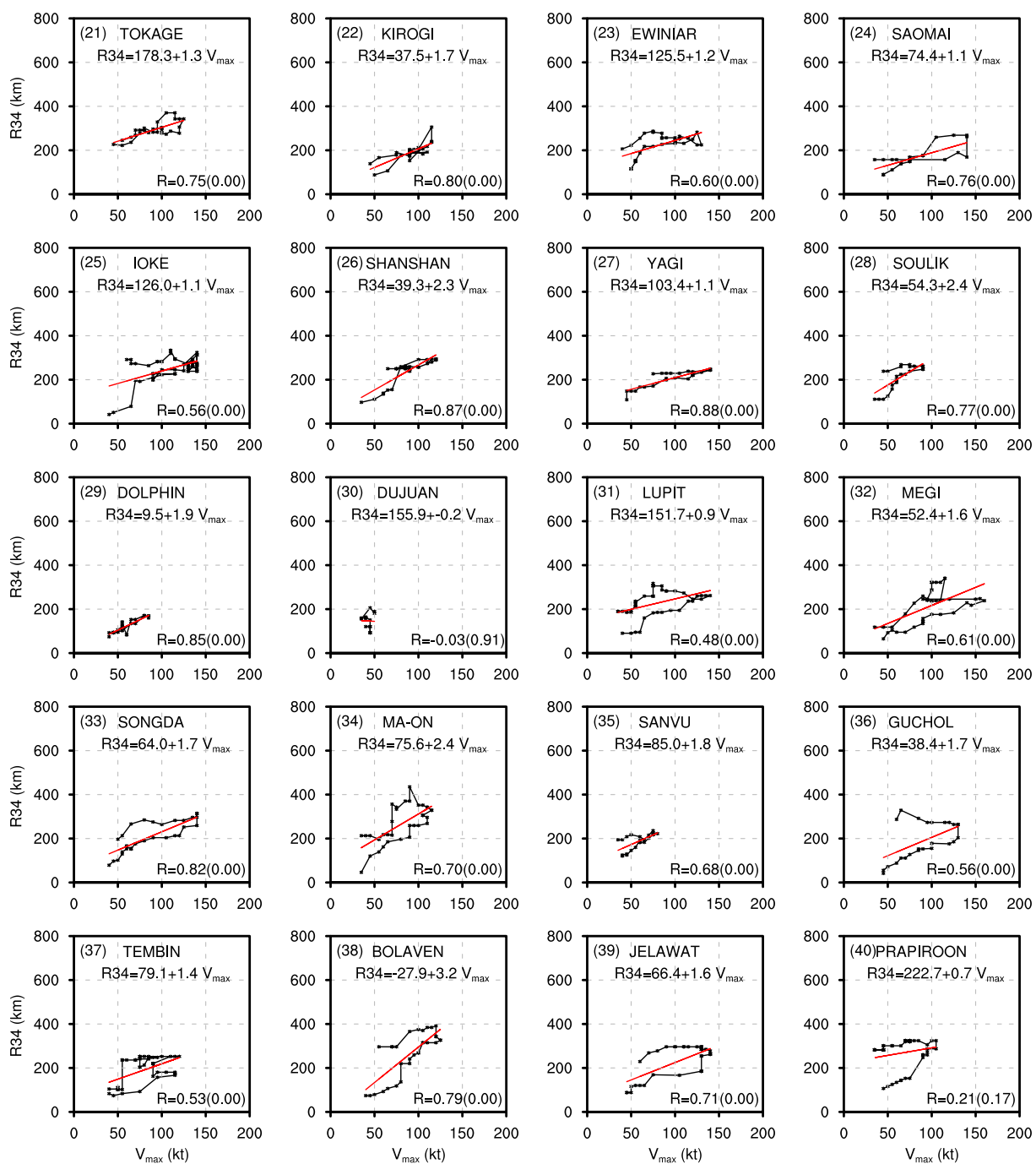


Fig. S1. (Continued).

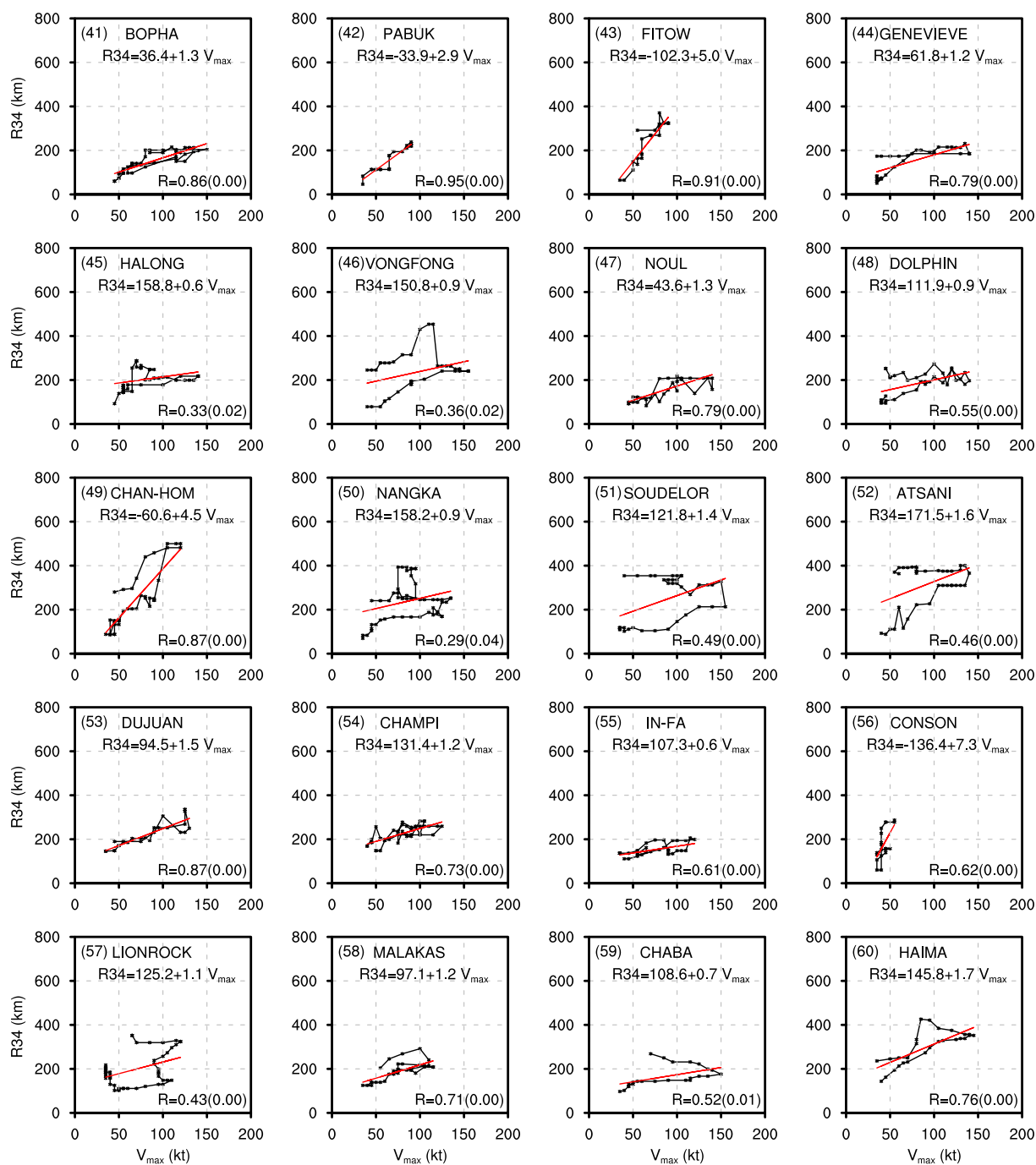


Fig. S1. (Continued).

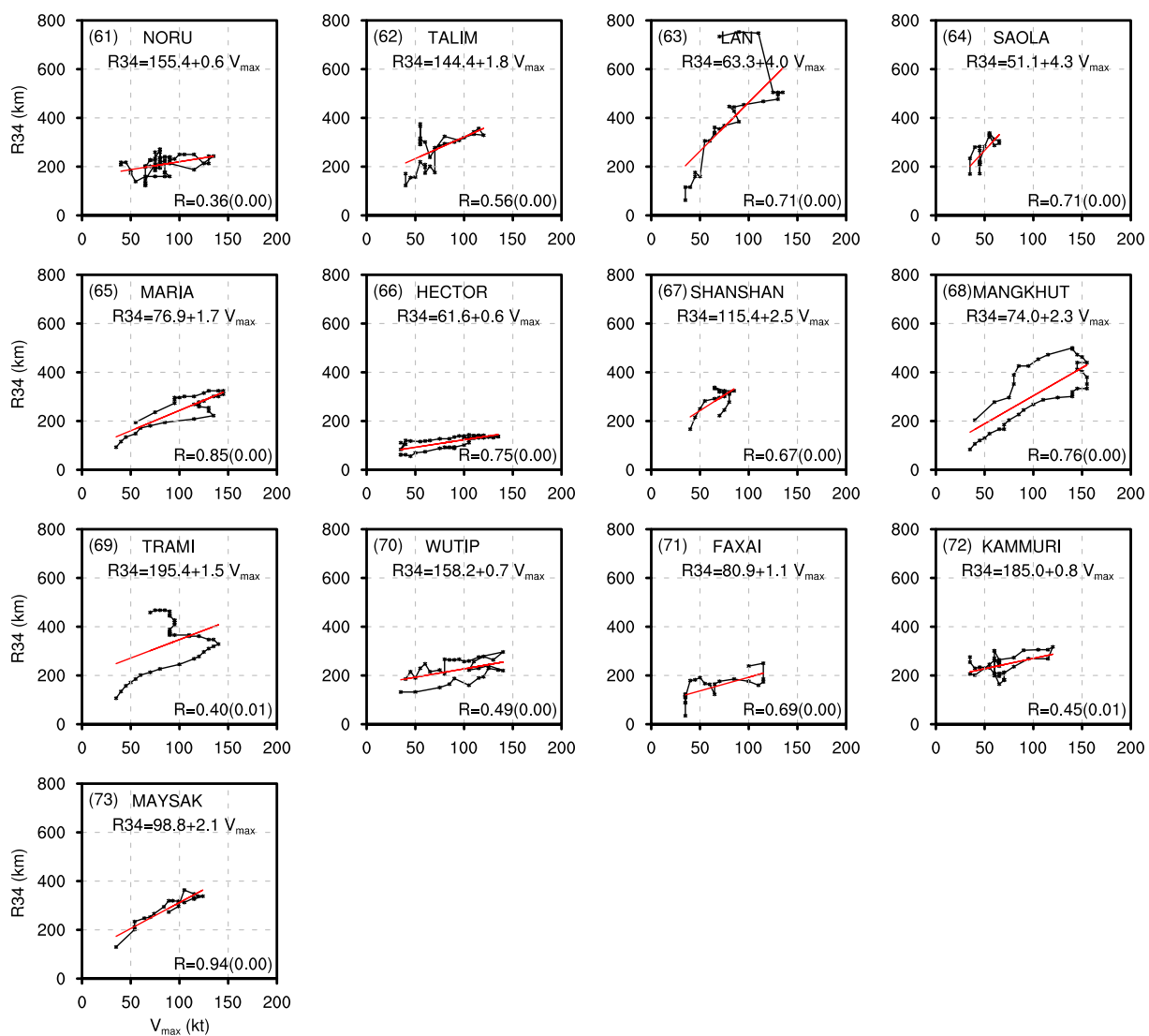


Fig. S1. (Continued).

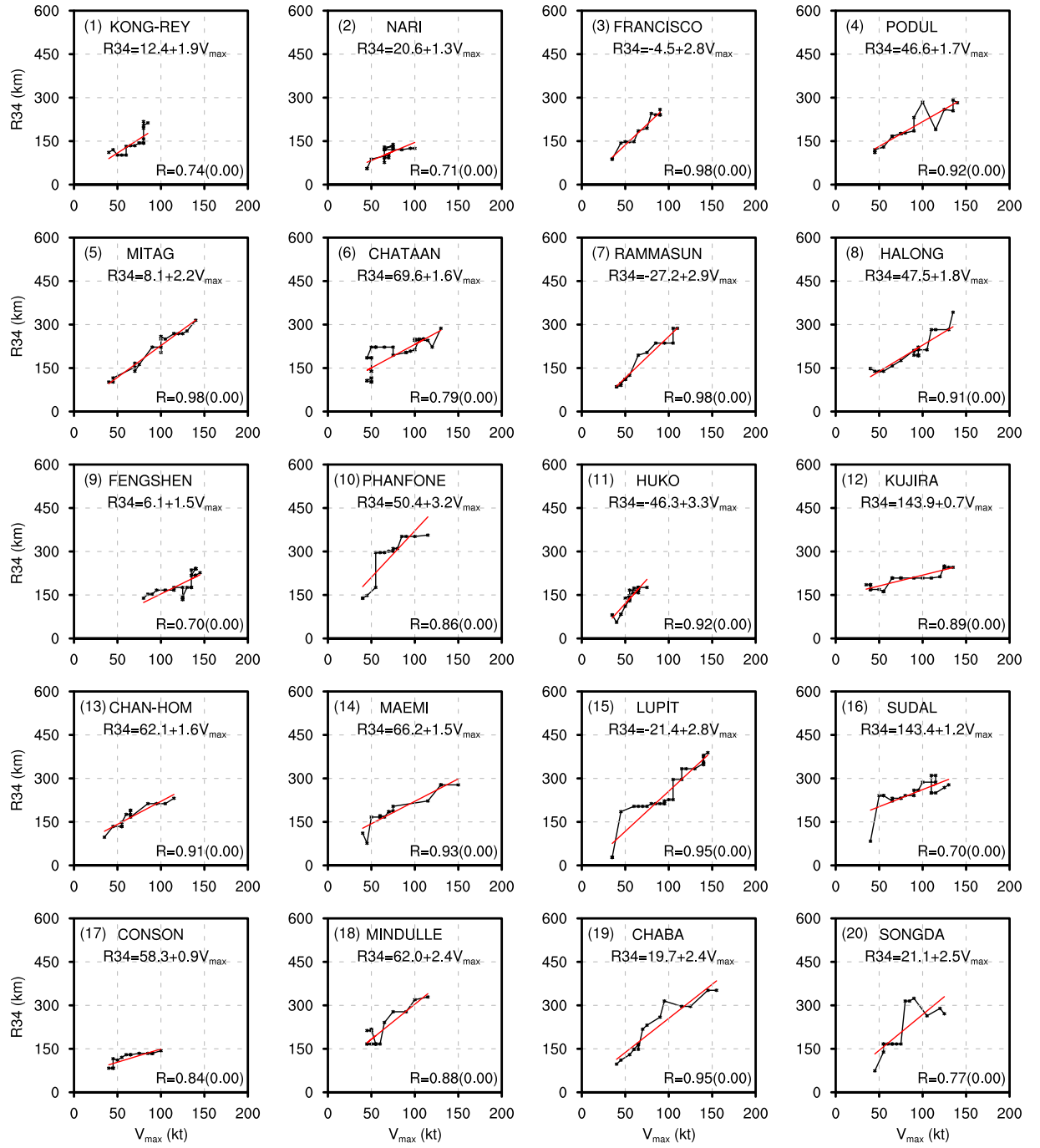


Fig. S2. As in Fig. S1, but for the development stage.

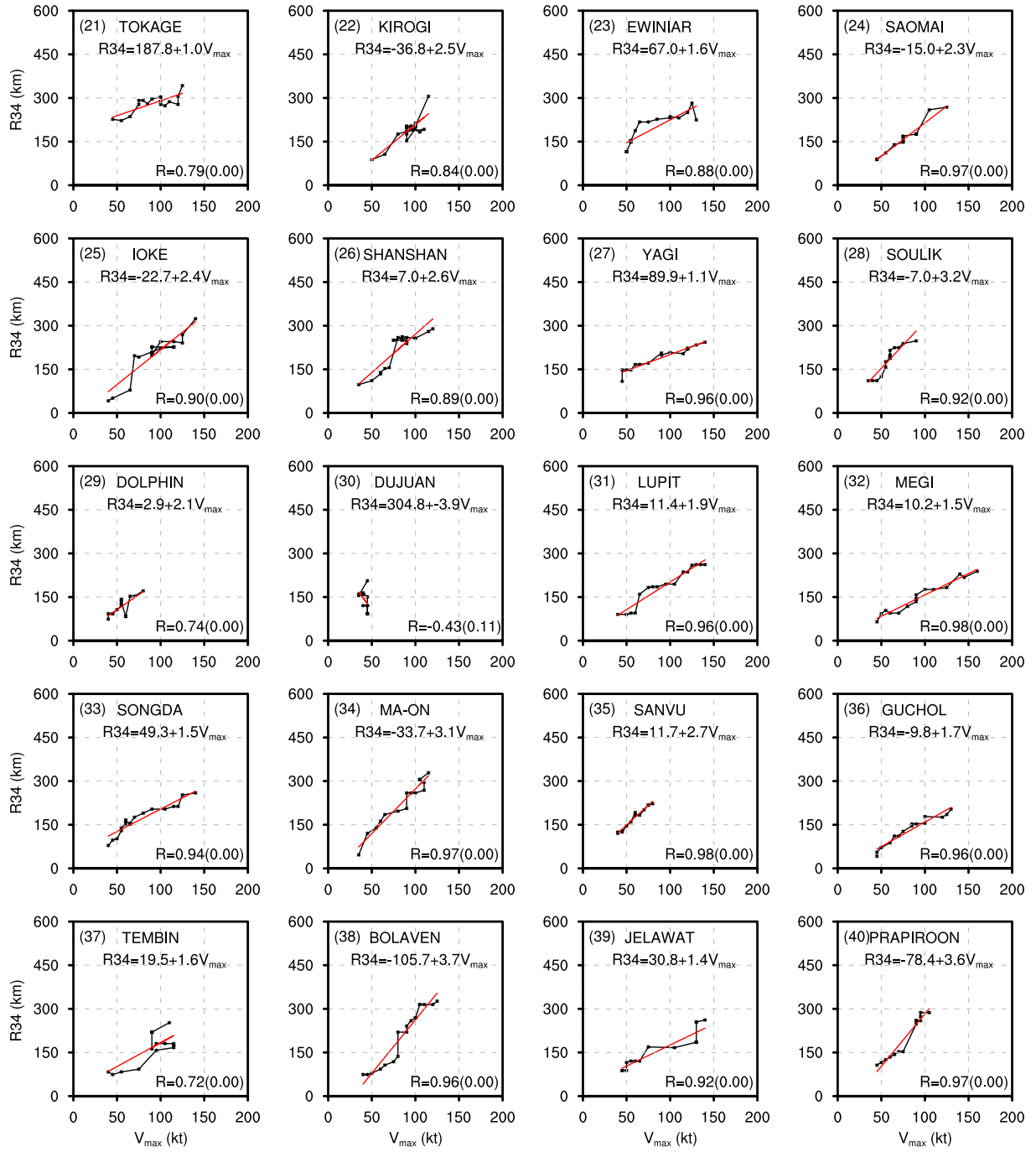


Fig. S2. (Continued).

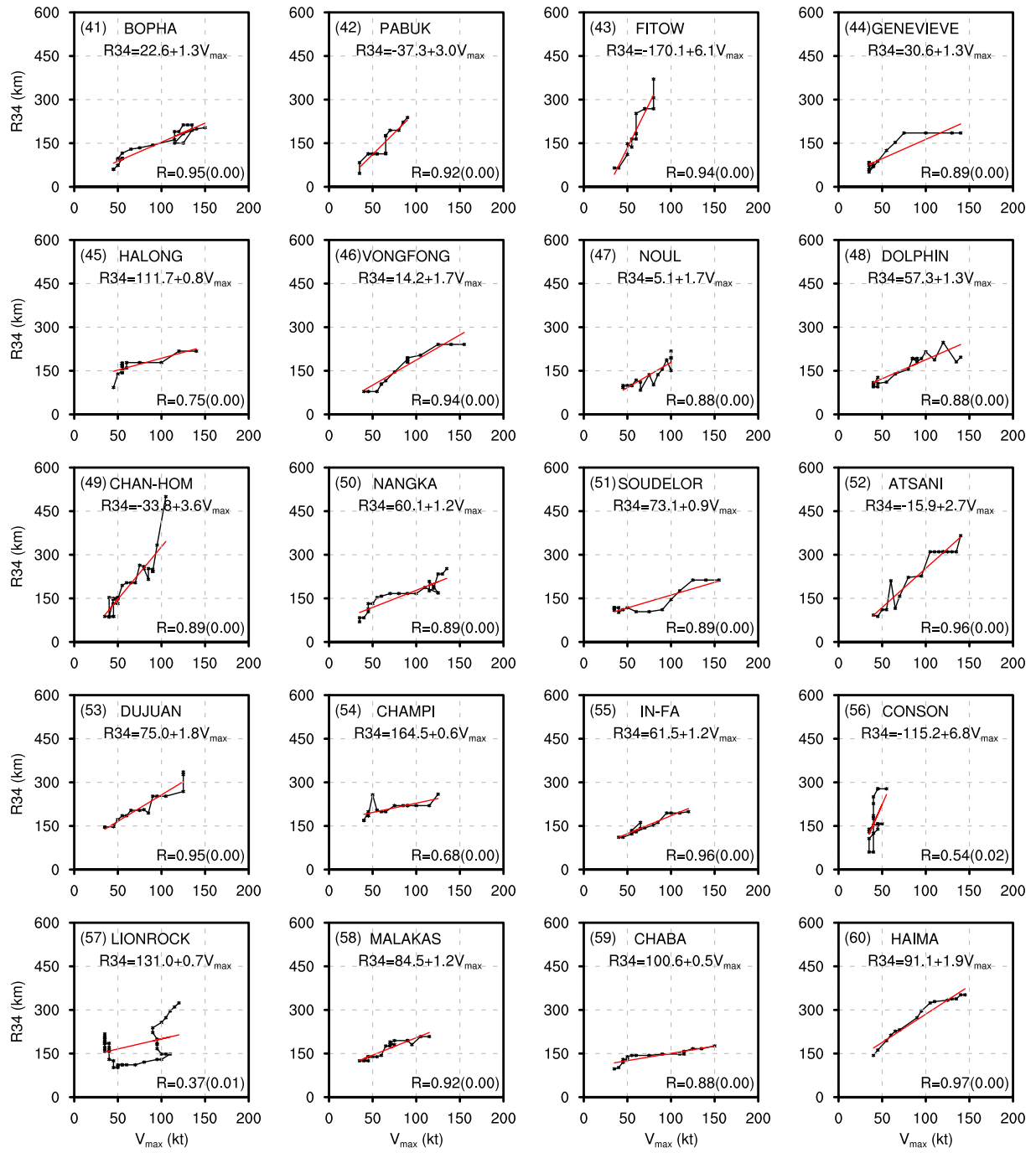


Fig. S2. (Continued).

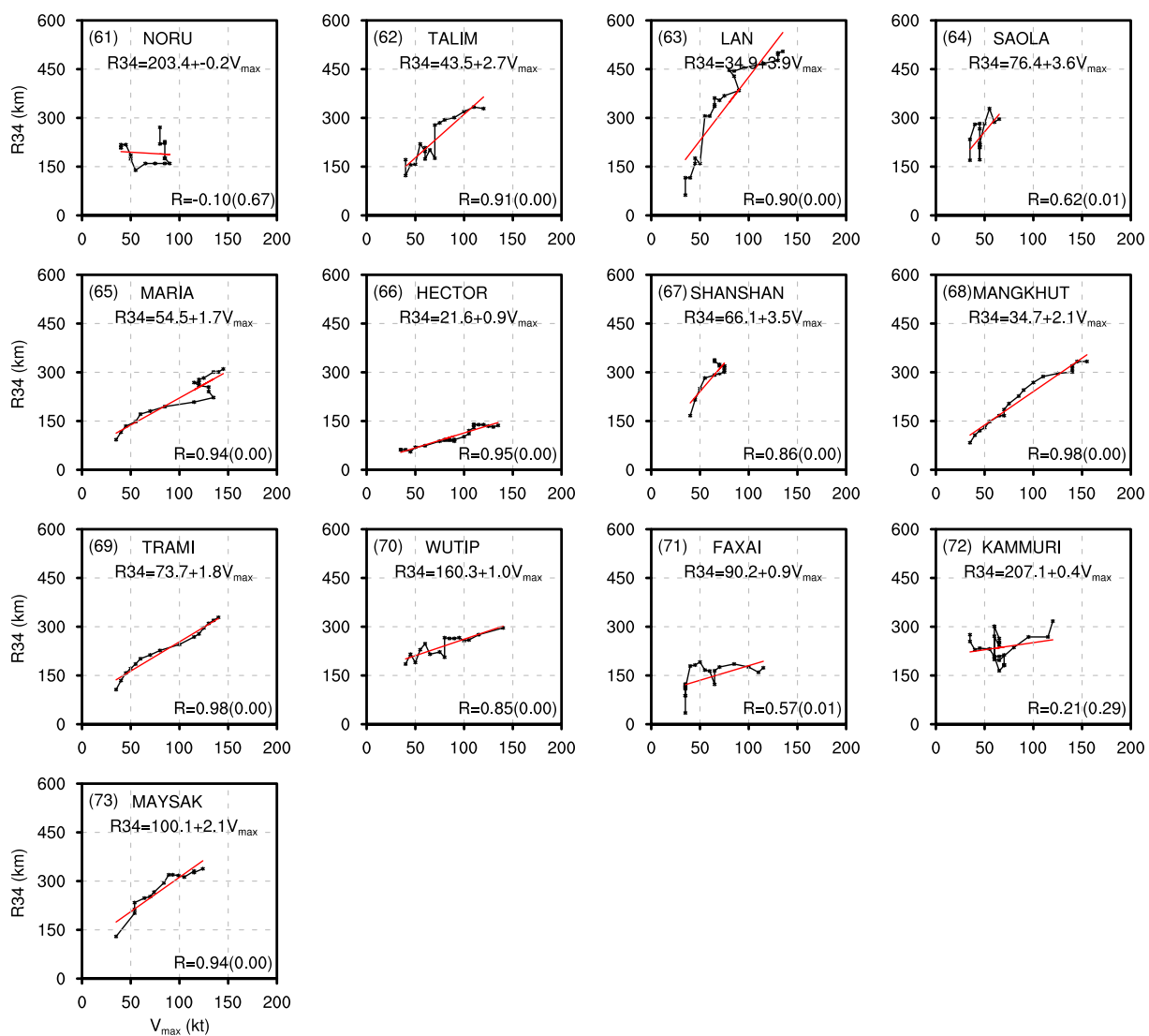


Fig. S2. (Continued).

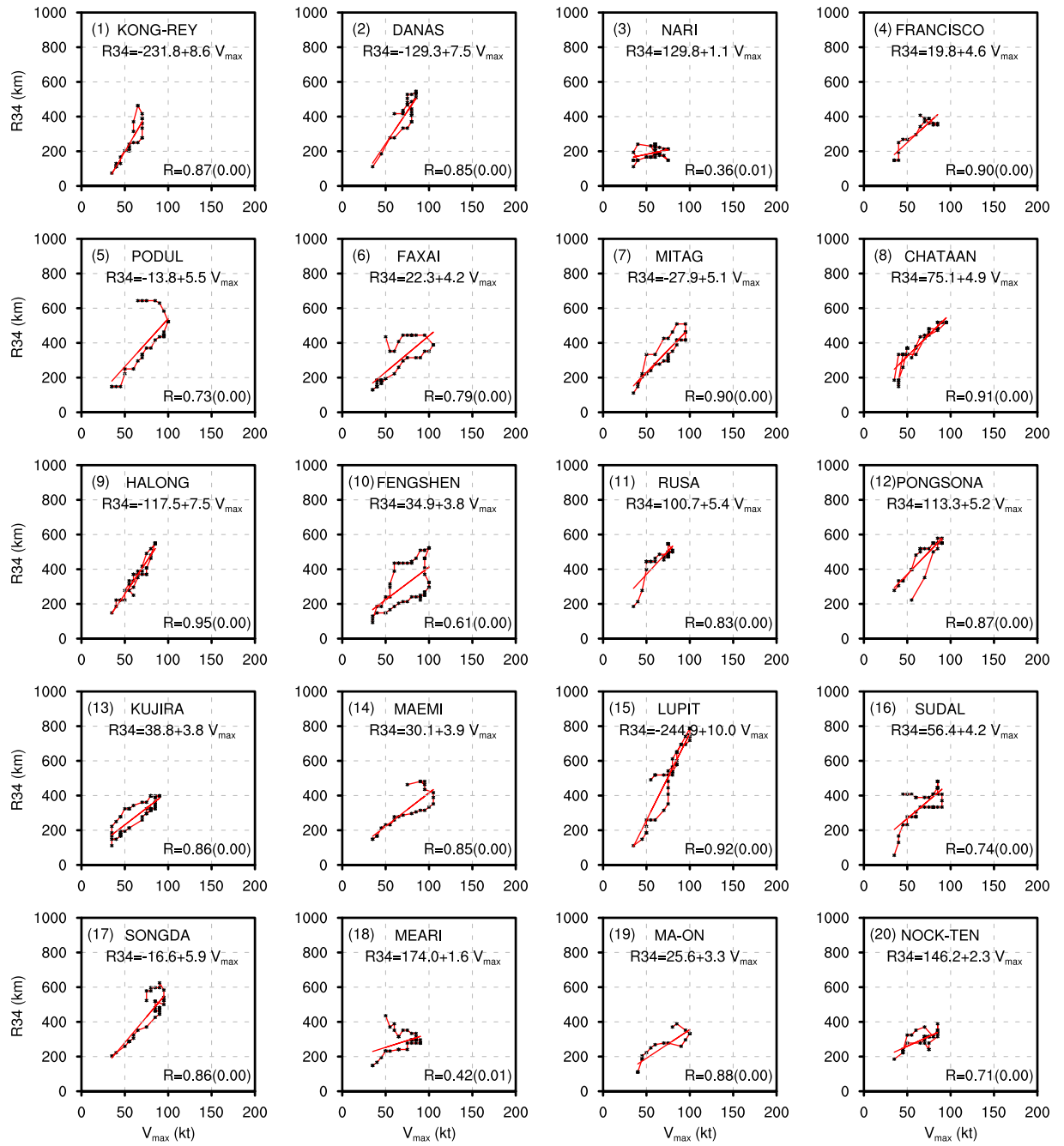


Fig. S3. Correlation and regression analysis throughout the whole lifetime for 58 JMA TCs from 2001 to 2019 over the western North Pacific. In each panel, the number and name of each TC are presented in the top left corner. Records of R34 and V_{max} are denoted as the black asterisks, and the linear regression lines of R34 against V_{max} are shown by the red line. The specific linear regression equation between R34 and V_{max} is presented. The correlation coefficient (R) between R34 and V_{max} is displayed in the bottom right corner of each panel, with the test value (p) of the R given in parentheses.

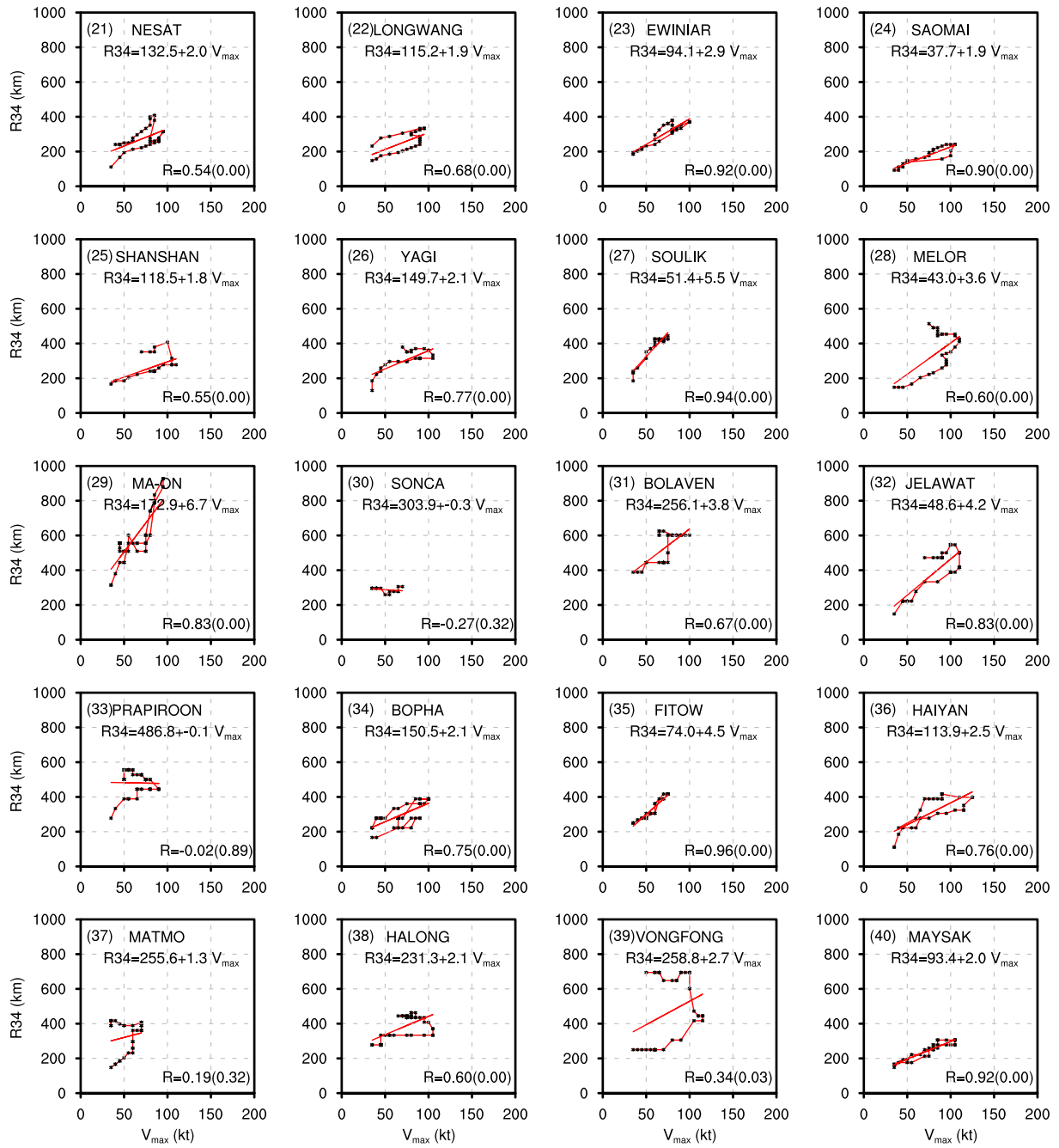


Fig. S3. (Continued).

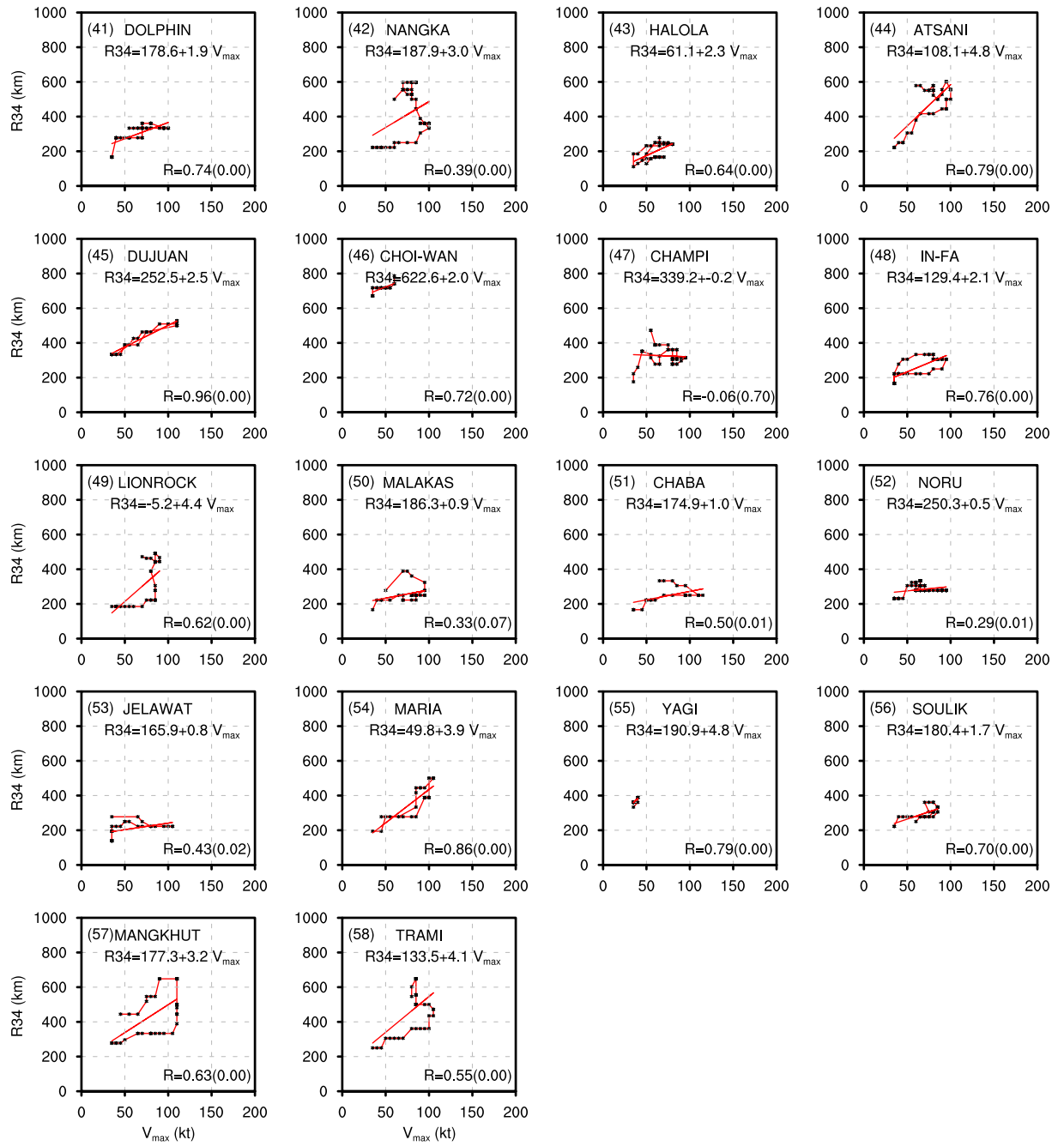


Fig. S3. (Continued).

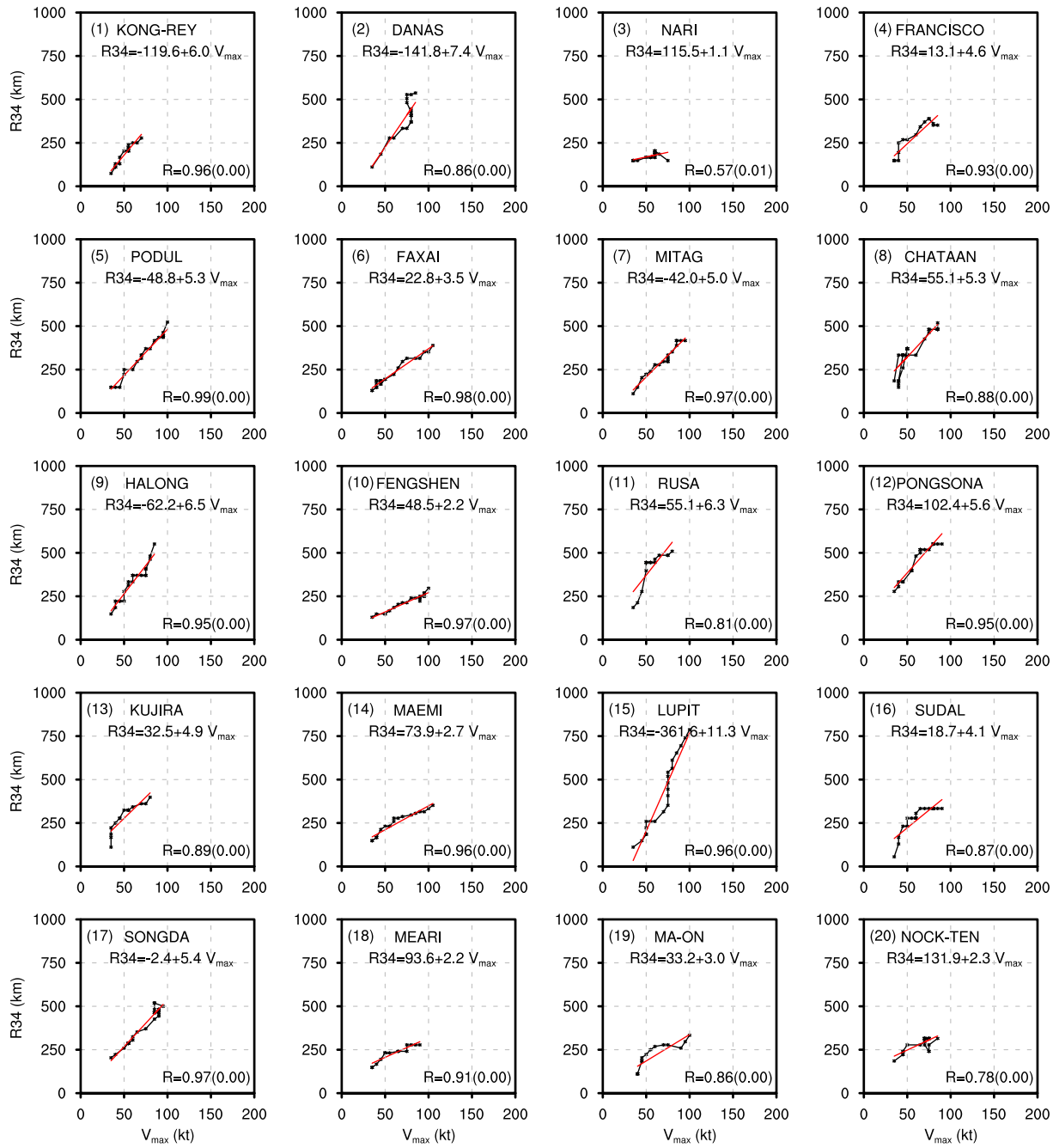


Fig. S4. As in Fig. S3, but for the development stage.

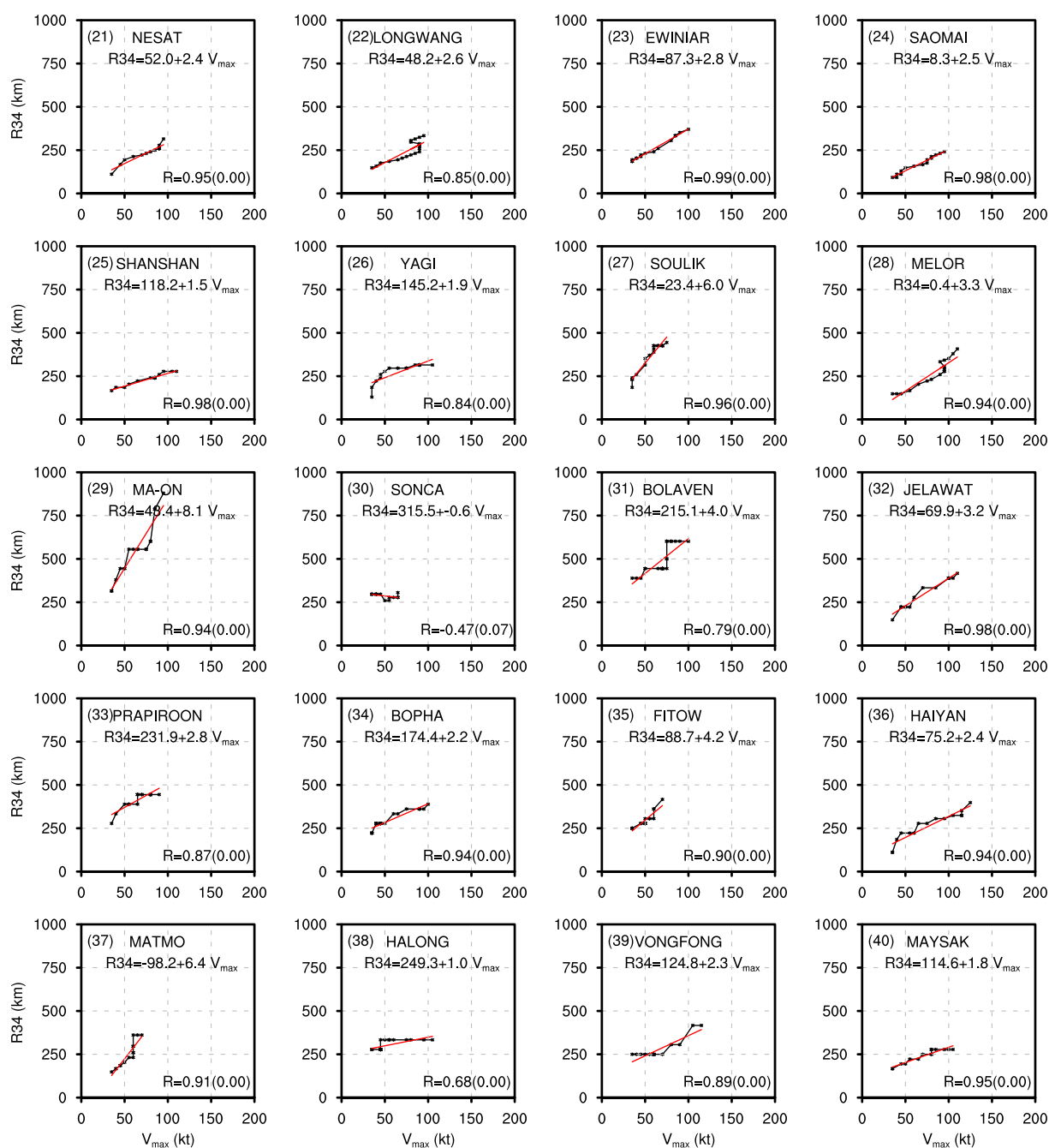


Fig. S4. (Continued).

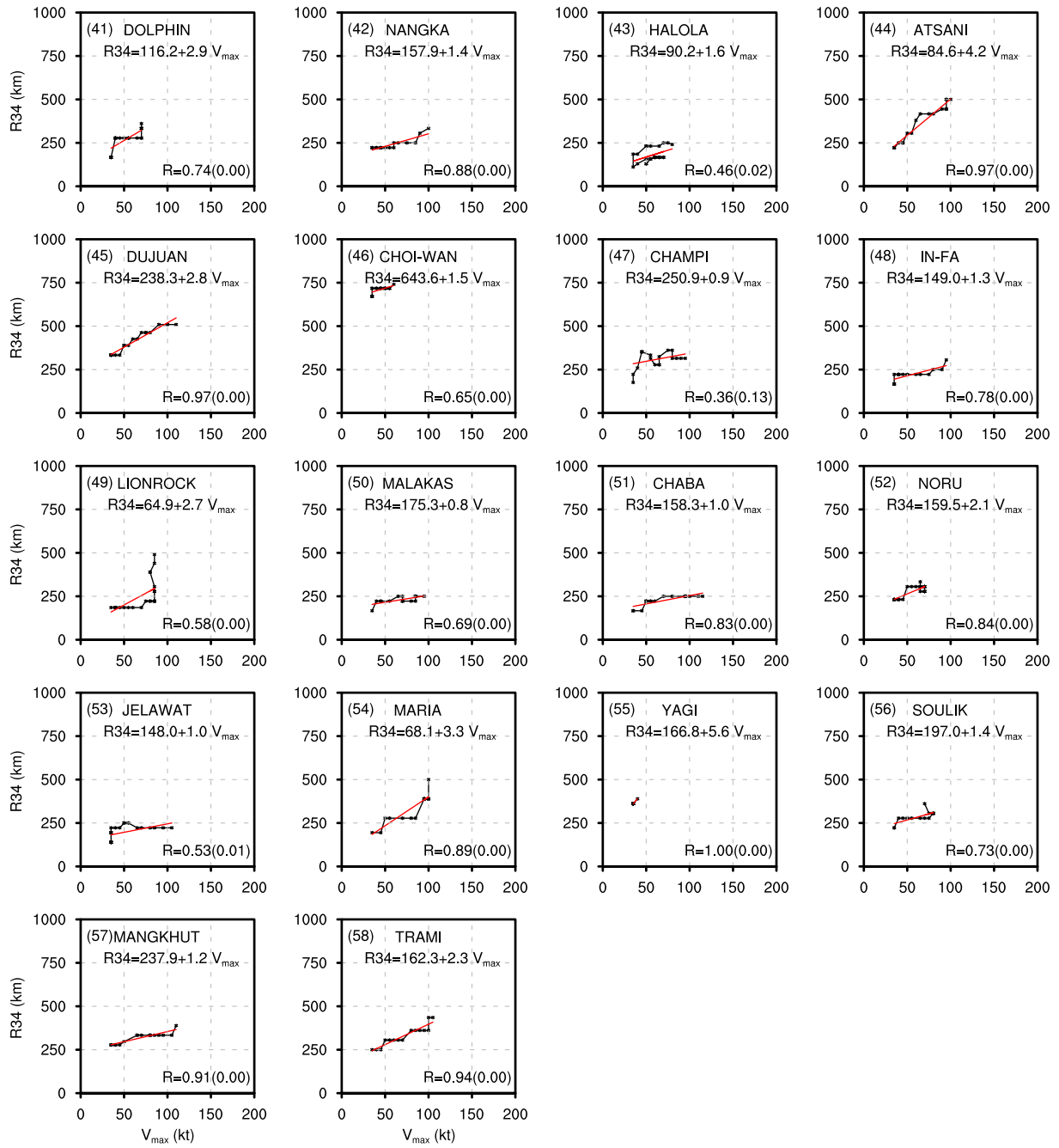


Fig. S4. (Continued).