

Electronic Supplementary Material to: Causes of a Typical Southern Flood and Northern Drought Event in 2015 over Eastern China*

Zhuoyuan LI¹, Qing YANG², Dian YUAN¹, Er LU¹, and Zhuguo MA^{2,3,4}

¹Key Laboratory of Meteorological Disaster, Ministry of Education (KLME), Joint International Research Laboratory of Climate and Environment Change (ILCEC), Collaborative Innovation Center on Forecast and Evaluation of Meteorological Disasters (CIC-FEMD), Nanjing University of Information Science and Technology, Nanjing 210044, China

²Key Laboratory of Regional Climate-Environment Research for Temperate East Asia, Institute of Atmospheric Physics, Chinese Academy of Sciences, Beijing 100029, China

³University of Chinese Academy of Sciences, Beijing 100049, China

⁴Xiongan Institute of Innovation, Chinese Academy of Sciences, Xiongan New Area 071800, China

ESM to: Li, Z. Y., Q. Yang, Y. Dian, E. Lu, and Z. G. Ma, 2023: Causes of a typical southern flood and northern drought event in 2015 over eastern China. *Adv. Atmos. Sci.*, **40**(11), 2092–2107, <https://doi.org/10.1007/s00376-023-2342-0>.

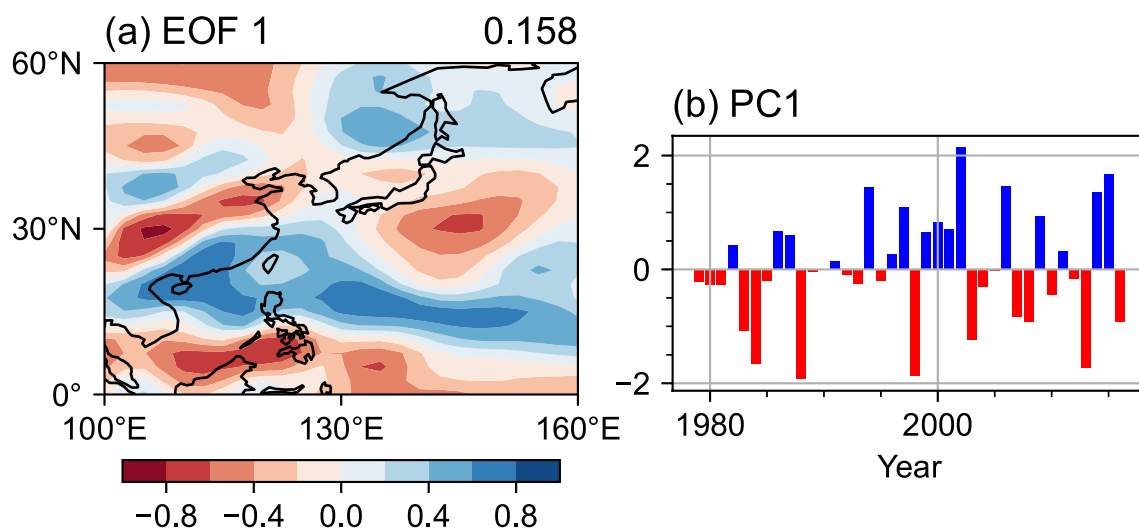


Fig. S1. Definitions of the PJ/EAP pattern and the PJ/EAP index. (a) EOF1 pattern of summer mean 850-hPa relative vorticity over the region (0°–60°N, 100°–160°E) for the period 1979–2016. (b) The corresponding normalized PC time series.

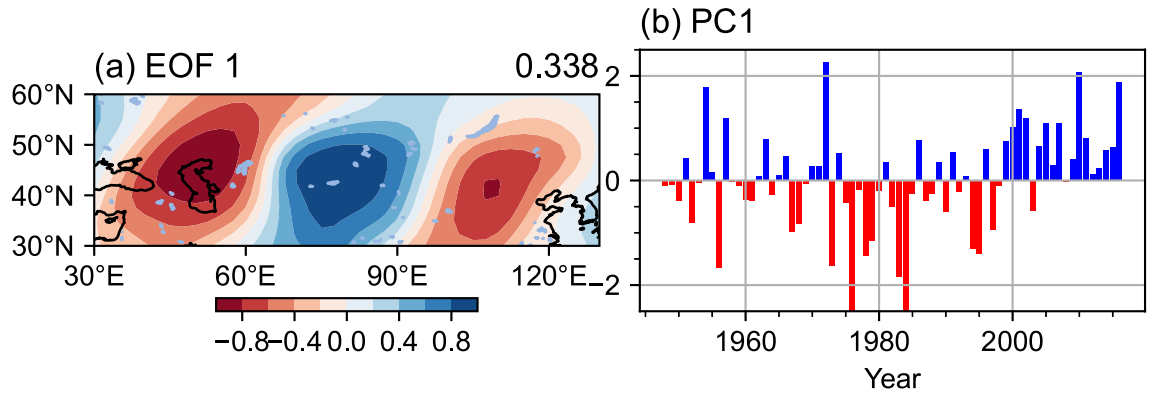


Fig. S2. (a) Definition of the SR teleconnection. The first leading EOF analysis result of the summer mean 200-hPa meridional wind velocity in July–August over area (30°–60°N, 30°–130°E) for the period 1979–2016. (b) The corresponding normalized PC time series (i.e., the PJ/EAP index).

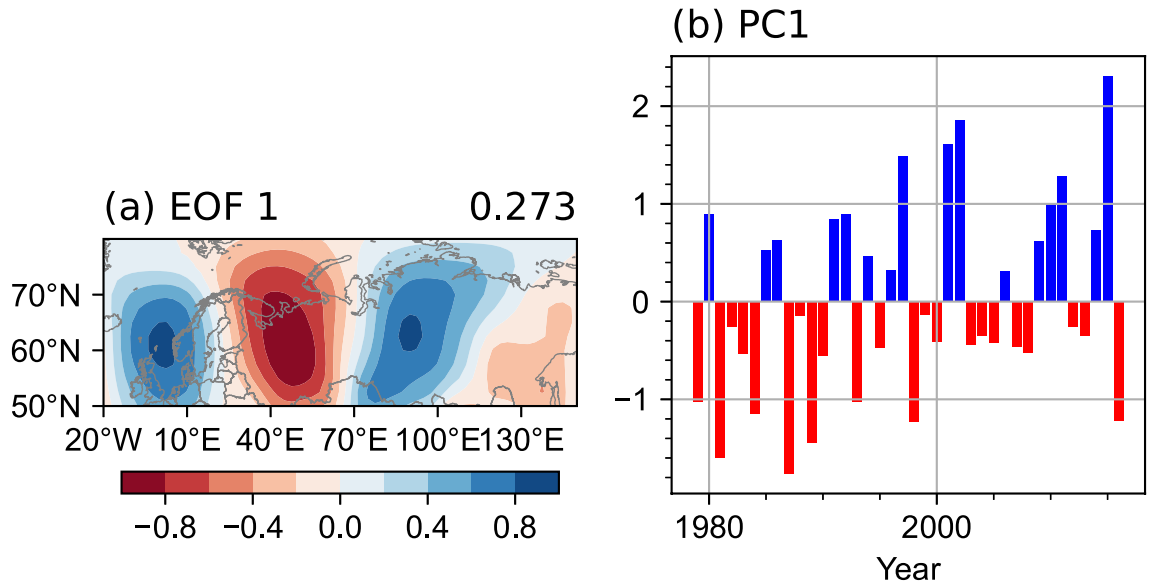


Fig. S3. Definitions of the BBC pattern and BBC index. (a) The first EOF of summer mean 250-hPa meridional wind over the region (50°–80°N, 20°W–150°E) for the period 1979–2016 (units: m s^{-1}). (b) The corresponding normalized PC time series.

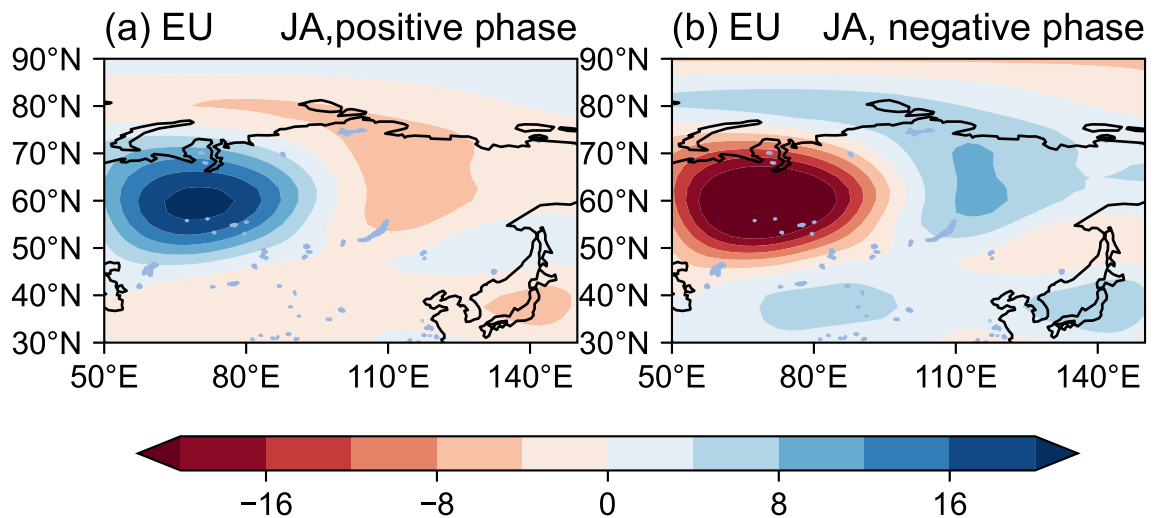


Fig. S4. The (a) positive and (b) negative phase of the EU pattern based on the definition of Wallace and Gutzler (1981). Maps show the composite 500-hPa geopotential height anomaly (units: gpm) in EU positive/negative years.